

UNITARIAN UNIVERSALIST ASSOCIATION
Shared Unitarian Universalist Values
(Adopted June 22, 2024)



How to Donate to Paint Branch

<https://pbuuc.breezechms.com/give/online>; or

Text the whole dollar amount to 301-321-7215; or

Place cash or a check in the offering basket, or mail a check to the church at: P.O. Box 676, Laurel, MD 20725-0676.



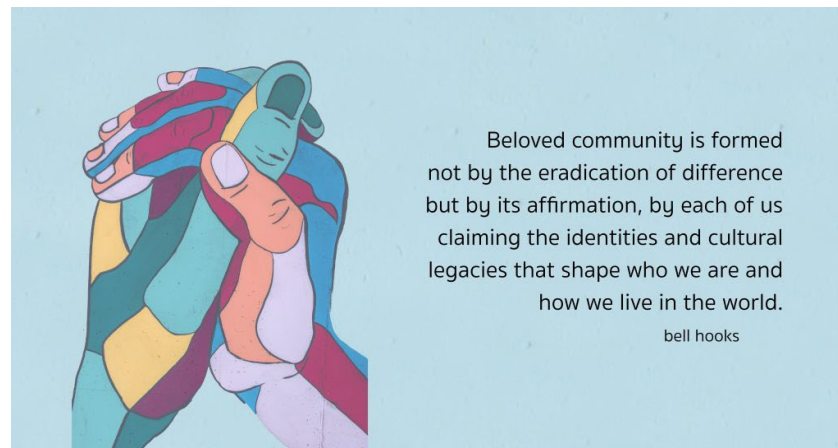
Paint Branch Unitarian Universalist Church

301-937-3666

www.pbuuc.org

Meeting Sundays at 3pm at:
University Christian Church
6800 Adelphi Road
Hyattsville, MD 20782

Paint Branch Unitarian Universalist Church
Order of Service



From website of UU Congregation of Asheville, Asheville, North Carolina

Building A New Way

Anthony Jenkins

with Worship Associates

Jim Flaherty and Carol Carter Walker

September 8, 2024 at 3:00 pm

ANTHONY JENKINS, *MINISTER*

JEANNETTE JACKSON, *CHURCH ADMINISTRATOR*

SHARON WERTH, *CHALICE DANCERS DIRECTOR*

AMELIA PEELE, *INTERIM MUSIC LEADER*

FRANCESCO BERRETT, *INTERIM PIANIST*

AUDREY DIXON, *TECH SUPPORT SPECIALIST*

Paint Branch Unitarian Universalist Church

ORDER OF SERVICE

Sunday, September 8, 2024 at 3:00 pm

Gathering Music Francesco Berrett

Interim Pianist

Welcome & Announcements Jim Flaherty

Worship Associate

Congregational Greeting Jim Flaherty

Call To Worship Anthony Jenkins

Minister

Hymn #121 We'll Build a Land Amelia Peele

Interim Music Leader
and Paint Branch Singers

Chalice Lighting Jim Flaherty

*It is easier to tear down than it is to build
It is easier to break a heart than to heal it
It is easier to spread misinformation than to correct it
It is easier to create conflict than to resolve it
It is easier to destroy a relationship than to build one
It is easier to pollute the environment than to clean it up
It is easier to start a war than to end it
It is easier to lose your temper than to keep your cool
It is easier to be critical than to be constructive
It is easier to tear down than it is to build*

Jillian DuBois

Candle For All Peoples Anthony Jenkins

Excerpt from Hopi Elder Reflection (June 2000)

Dance We Are the Rising Sun (Ravyn Stanfield)

Sharon Werth, *Artistic Director*

Ken Shilling, *Drummer*

Abby Crowley, Marcia Freeman, Anne Hoover, Sherry Mitchell,

Karen Lee Scrivo, *Chalice Dancers*

Joys And Sorrows

Lynn Louison

Pastoral Care Associate

Communal Ritual

Silence

Chalice Reflection

Carol Carter Walker

Worship Associate

Offering

Anthony Jenkins

Offertory *Landslide (Stevie Nicks)*

Francesco Berrett,
Anthony Jenkins, and Amelia Peele

Sermon *Building a New Way*

Anthony Jenkins

Hymn #1017 Building A New Way

Amelia Peele
and Paint Branch Singers

Extinguishing The Chalice

Jim Flaherty

*We extinguish this flame but not the light of truth, the
warmth of community, or the fire of commitment. These we
carry in our hearts until we are together again.*

Elizabeth Sells Jones

Response *Fuente de Amor/Spirit of Life*

Closing Words *"This Is It"* James Broughton Anthony Jenkins

Music For Connection & Conversation Francesco Berrett

** Please rise in body and/or spirit*

A special thank you!

Tech: Audrey Dixon, Liz Citrin, Andy McIntire

Ushers: Kathy Bartolomeo, Margaret McLellan

Lead Usher: Chris Evans

This service is recorded using a camera in the rear of the sanctuary. If you wish to avoid being on camera, please sit in the back rows.